

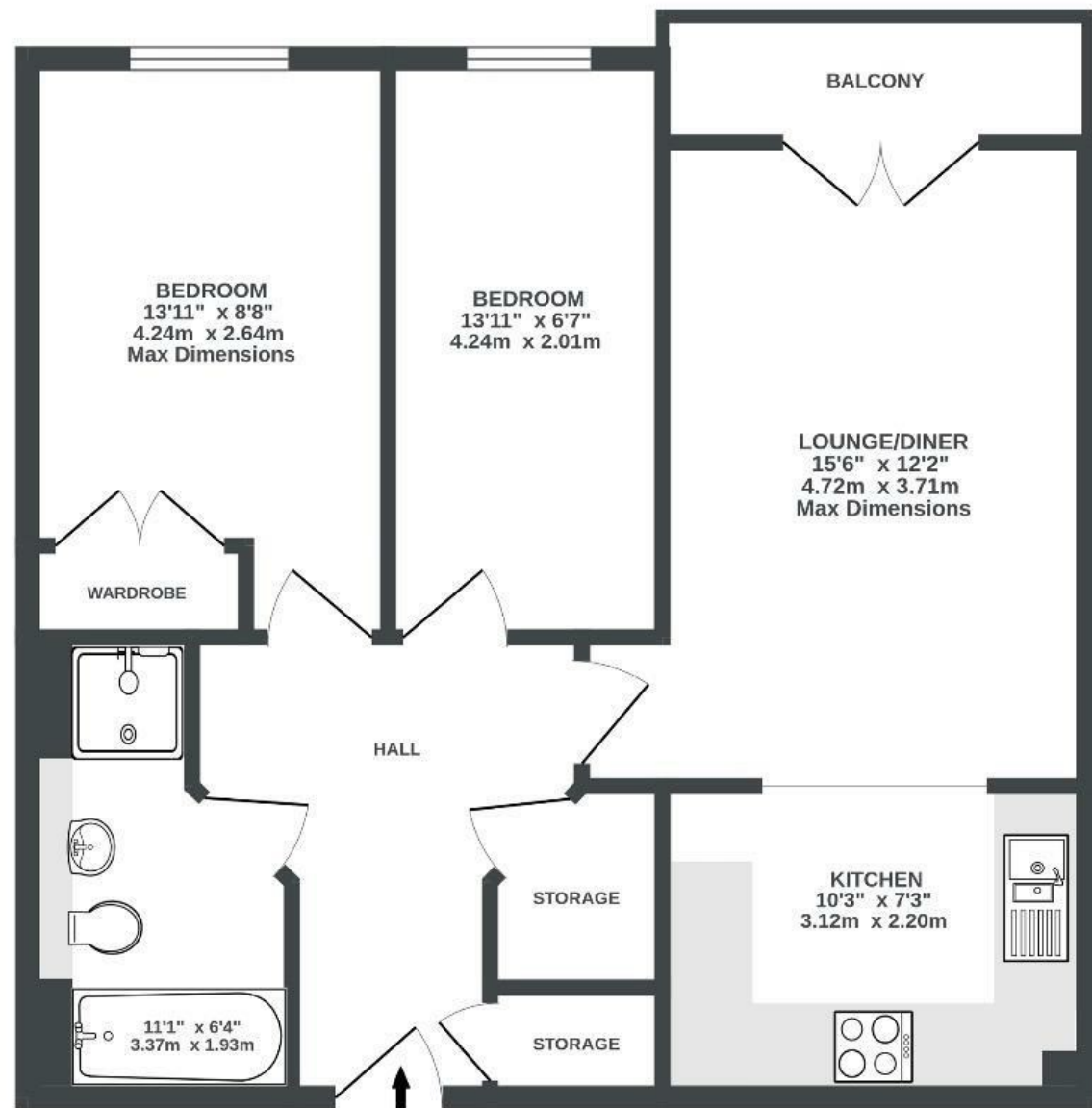
Squires Court

BEDMINSTER

APPROXIMATE FLOOR AREA
56.7 SQM / 610 SQFT



THIRD FLOOR
610 sq.ft. (56.7 sq.m.) approx.



Illustrations are for reference purposes only, measurements are approximate, not to scale.

~~Boardwalk~~

Bedminster

, BRISTOL

£

£285,000



Bristol, BS3

4RX

zzz

2 Bedrooms



1 Bathrooms

"We have really enjoyed living in Squires Court for the past three and a half years. Everything you need is right on your doorstep - Wapping Wharf, Victoria Park, the Harbour, North Street, bars and restaurants and Temple Meads. You can even catch the bus to the airport on Bedminster Parade. We love the view of Victoria Park from the flat and sitting on the balcony with a coffee. Despite being so central in the city the flat is really quiet and gets the sun all day which makes it really bright and warm. We love going for a walk or a run around the Harbour and getting a pint at the Ostrich. Bristol Loaf is a great cafe right on our doorstep as well as the farm animals at Windmill Hill City Farm."

